

# AVENIR - POD 20

THIS INSTRUMENT PREPARED BY  
 RONNIE L. FURNISS  
 OF  
**CAULFIELD and WHEELER, INC.**  
 SURVEYORS - ENGINEERS - PLANNERS  
 7900 GLADES ROAD, SUITE 100  
 BOCA RATON, FLORIDA 33434 - (561)392-1991  
 CERTIFICATE OF AUTHORIZATION NO. LB3591  
 FEBRUARY 2023

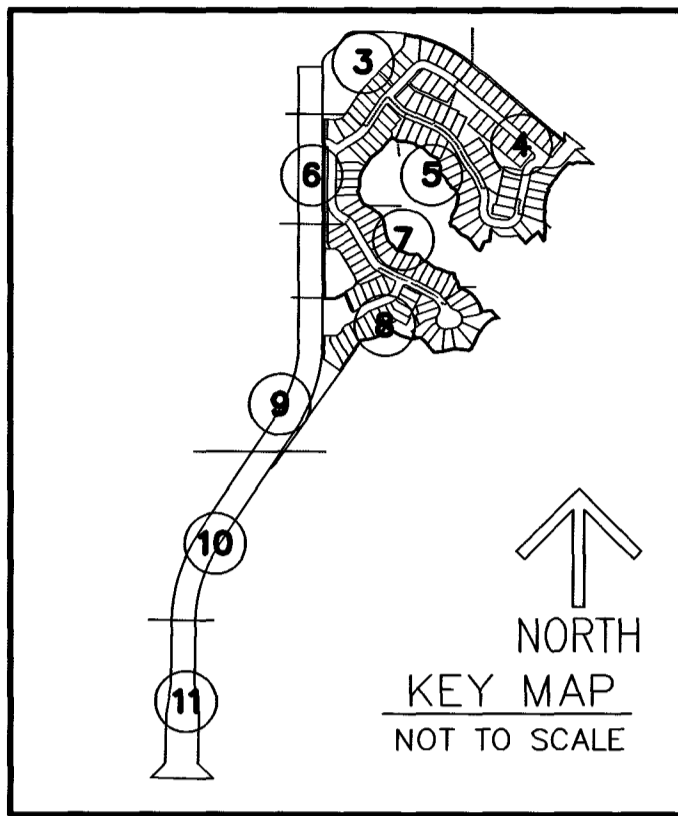
BEING A REPLAT OF A PORTION OF PARCEL A-1, AVENIR, AS RECORDED IN PLAT BOOK  
 127 PAGE 85, TOGETHER WITH A PORTION OF TRACT RBE8, AVENIR - POD 15, AS  
 RECORDED IN PLAT BOOK 134 PAGE 179, OF THE PUBLIC RECORDS OF PALM BEACH  
 COUNTY, FLORIDA LYING IN SECTIONS 9, 16 AND 17, TOWNSHIP 42 SOUTH, RANGE 41  
 EAST, CITY OF PALM BEACH GARDENS, PALM BEACH COUNTY, FLORIDA.

### LEGEND/ABBREVIATIONS

- CL - CENTERLINE
- Δ - DELTA (CENTRAL ANGLE)
- AC - ACRES
- CD - CHORD DISTANCE
- DE - DRAINAGE EASEMENT
- FSE - FIRE SAFETY ACCESS EASEMENT
- L - ARC LENGTH
- LAE - LIMITED ACCESS EASEMENT
- LB - LICENSED BUSINESS
- LBE - LANDSCAPE BUFFER EASEMENT
- LSE - LIFT STATION EASEMENT
- O.R.B. - OFFICIAL RECORD BOOK
- PB - PLAT BOOK
- PG - PAGE
- P.P.A.E. - PERPETUAL PUBLIC ACCESS EASEMENT
- R - RADIUS
- (R) - INDICATES RADIAL LINE
- RB - INDICATES RADIAL BEARING
- RBE - ROADWAY BUFFER EASEMENT
- RWAE - RETAINING WALL ACCESS EASEMENT
- SF - SQUARE FEET
- SUA.E. - SEACOAST UTILITY AUTHORITY EASEMENT
- UE - UTILITY EASEMENT
- PRM - DENOTES PERMANENT REFERENCE MONUMENT
- 5/8" IRON ROD WITH CAP STAMPED
- C&W PRM LB 3591
- - DENOTES PERMANENT CONTROL POINT
- - 1/4 SECTION CORNER
- ✕ - SECTION CORNER

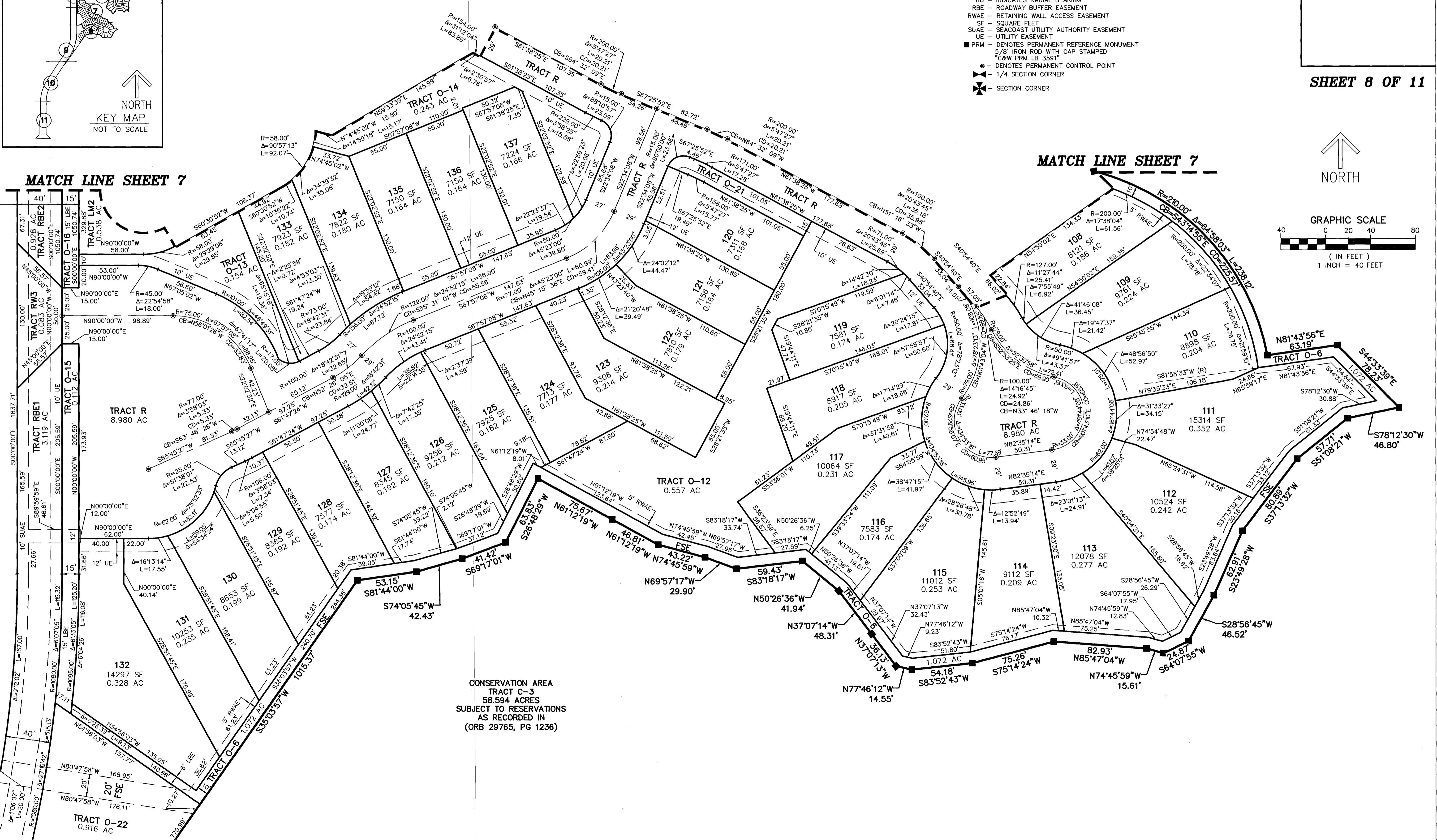
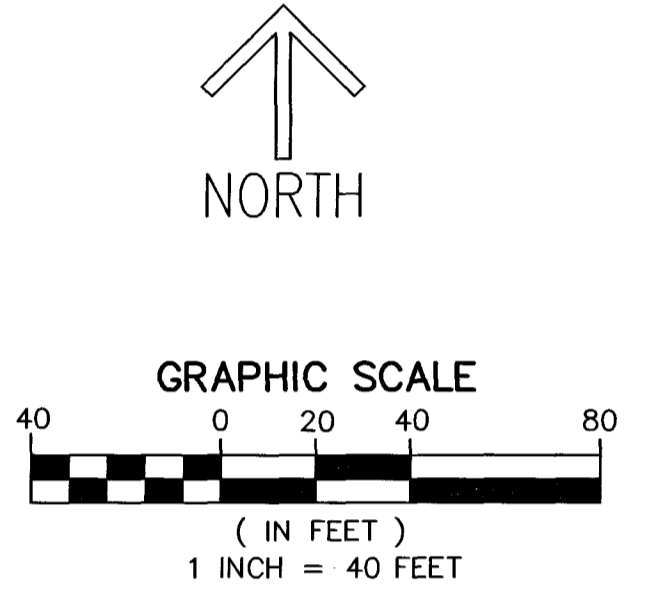
# 120

SHEET 8 OF 11



MATCH LINE SHEET 7

MATCH LINE SHEET 7



CONSERVATION AREA  
 TRACT C-3  
 58.594 ACRES  
 SUBJECT TO RESERVATIONS  
 AS RECORDED IN  
 (ORB 29765, PG 1236)

SEE SHEET 9